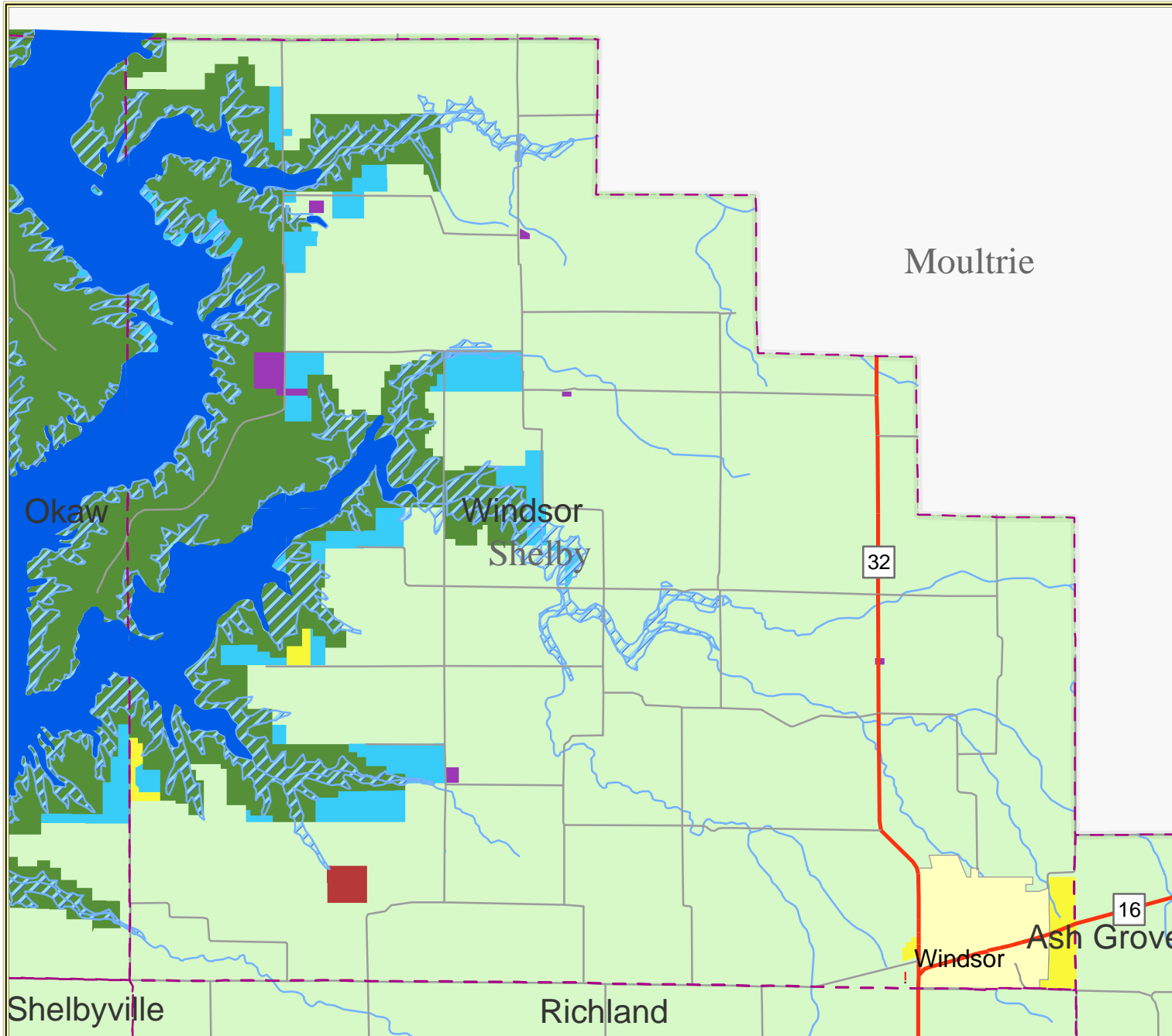
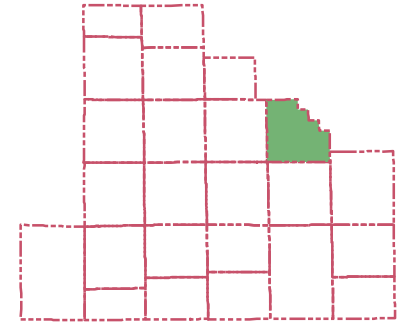


Windsor, Shelby County, IL

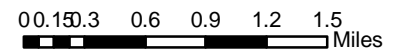
Future Zoning



Legend

- | | |
|----------------------------|-------------------|
| A Agriculture | U.S. Highway |
| GB General Business | Interstate |
| GL Government Land | State Highway |
| I1 Industry | Major Street |
| R1 Single-Family Residence | Railroad |
| RR Rural Residence | Streams |
| FPO Flood Plain Overlay | City |
| Incorporated Community | Township Boundary |
| Lake | County Boundary |

1:60,000



Source: USGS, ISGS, ESRI, DURP, RockFord Map
Created by: Yijie Zheng
Shelby County Project Working Group
Department of Urban & Regional Planning
University of Illinois at Urbana-Champaign
Date: March 2005
Coordinate system: NAD 1983 StatePlane
Illinois East FIPS 1201 Feet