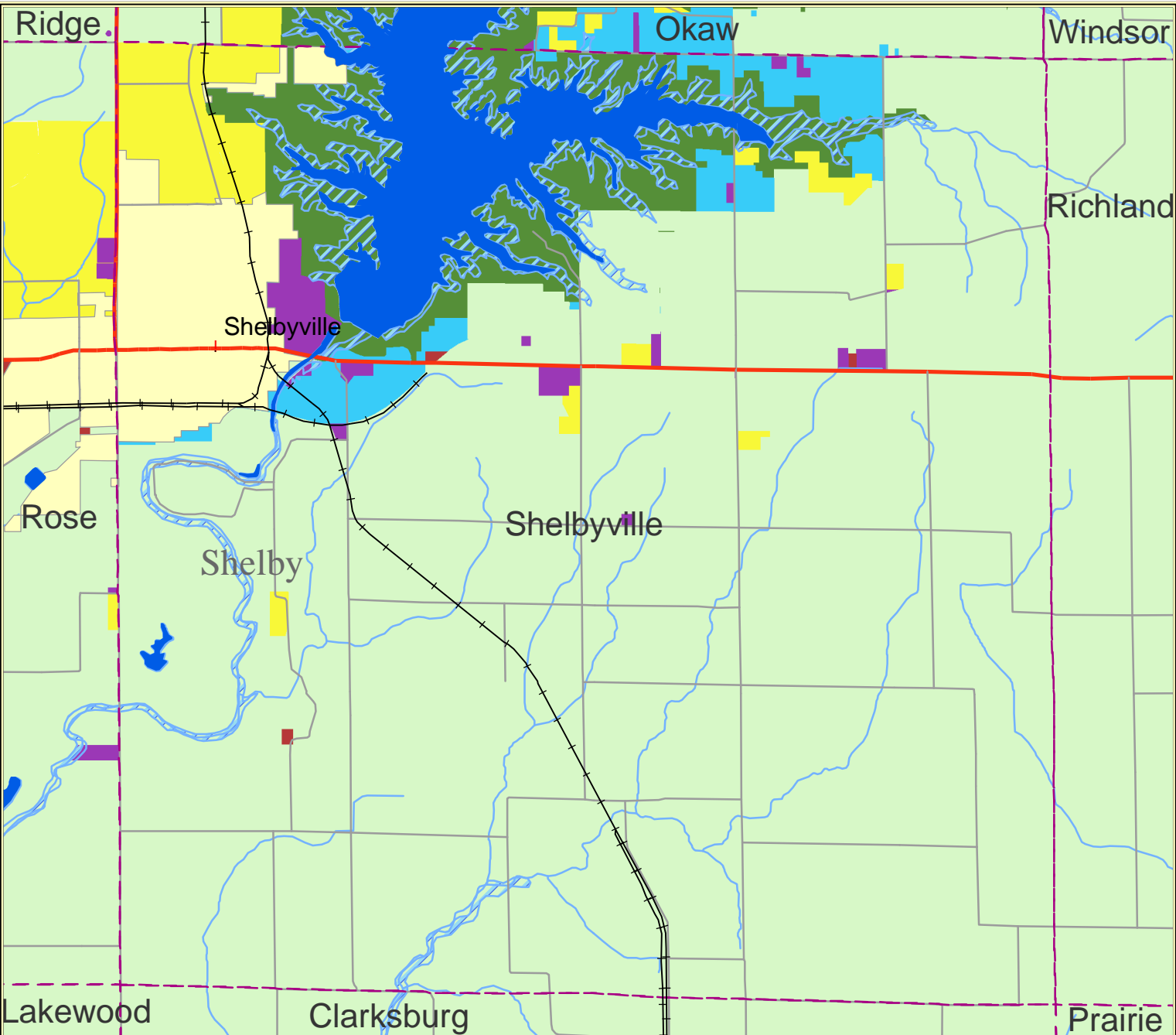
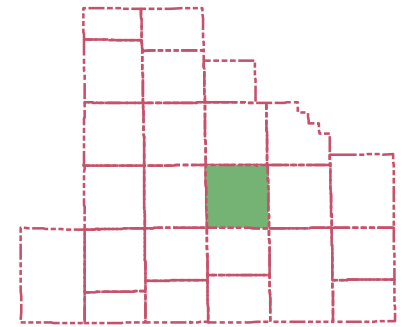
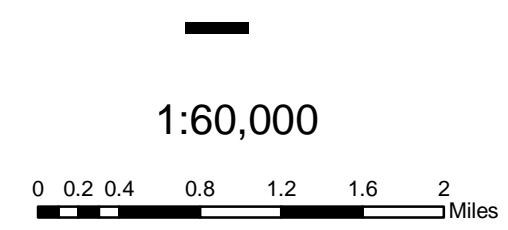


Shelbyville, Shelby County, IL

Future Zoning



- Legend**
- | | |
|----------------------------|-------------------|
| A Agriculture | U.S. Highway |
| GB General Business | Interstate |
| GL Government Land | State Highway |
| I1 Industry | Major Street |
| R1 Single-Family Residence | Railroad |
| RR Rural Residence | Streams |
| FPO Flood Plain Overlay | City |
| Incorporated Community | Township Boundary |
| Lake | County Boundary |



Source: USGS, ISGS, ESRI, DURP, RockFord Map
 Created by: Yijie Zheng
 Shelby County Project Working Group
 Department of Urban & Regional Planning
 University of Illinois at Urbana-Champaign
 Date: March 2005
 Coordinate system: NAD 1983 StatePlane
 Illinois East FIPS 1201 Feet