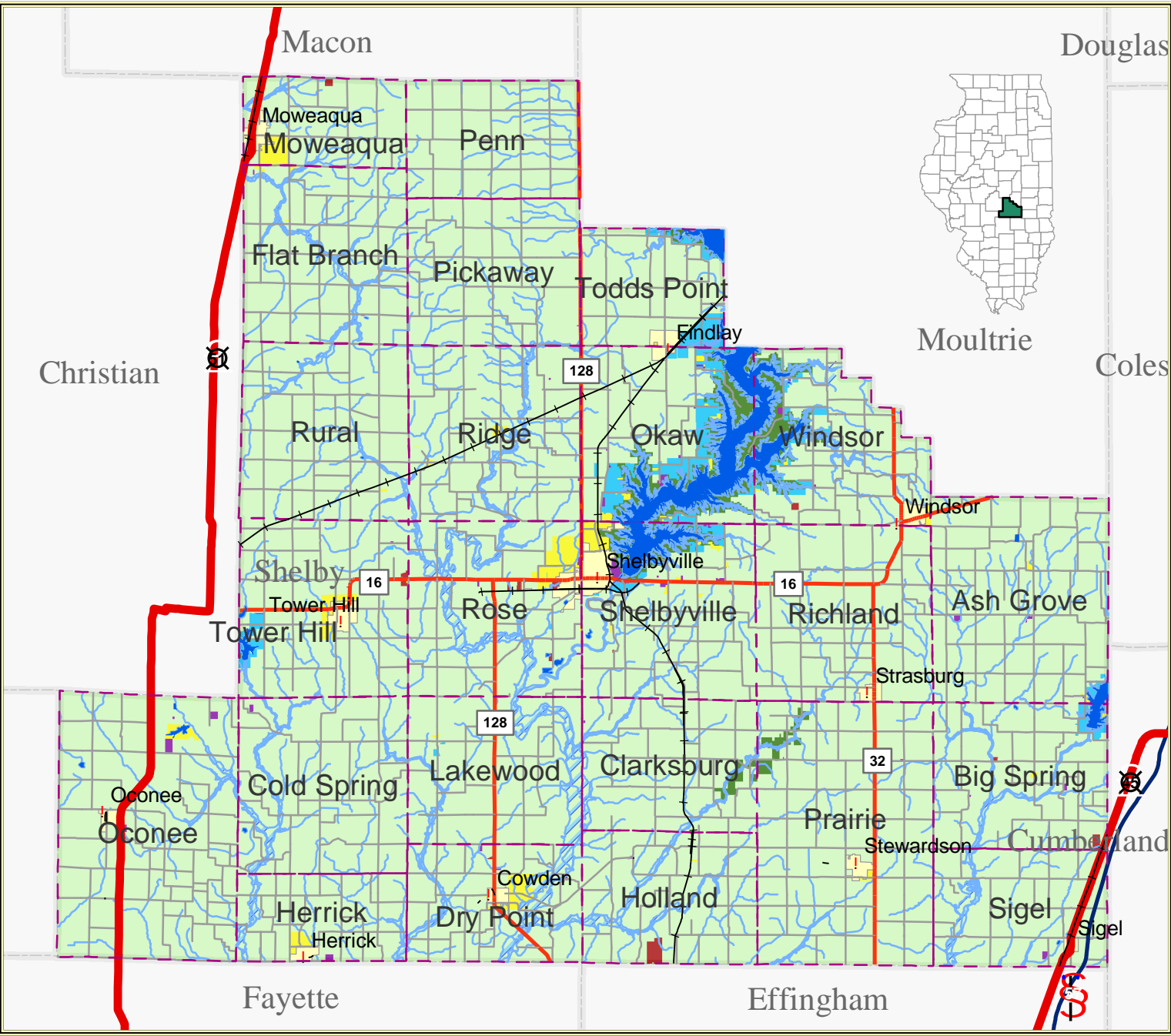


# Future Zoning Map of Shelby County, IL

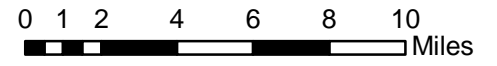


## Legend

- |                            |                   |
|----------------------------|-------------------|
| A Agriculture              | U.S. Highway      |
| GB General Business        | Interstate        |
| GL Government Land         | State Highway     |
| I1 Industry                | Major Street      |
| R1 Single-Family Residence | Railroad          |
| RR Rural Residence         | Streams           |
| FPO Flood Plain Overlay    | City              |
| Incorporated Community     | Township Boundary |
| Lake                       | County Boundary   |



1:320,000



Source: USGS, IGS, ESRI, DURP, RockFord Map  
 Created by: Yijie Zheng  
 Shelby County Project Working Group  
 Department of Urban & Regional Planning  
 University of Illinois at Urbana-Champaign  
 Date: March 2005  
 Coordinate system: NAD 1983 StatePlane  
 Illinois East FIPS 1201 Feet