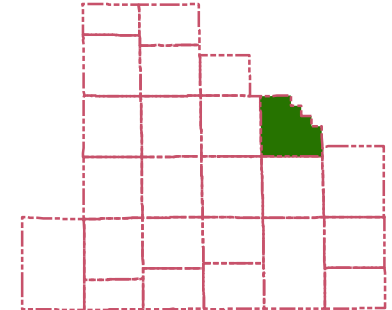
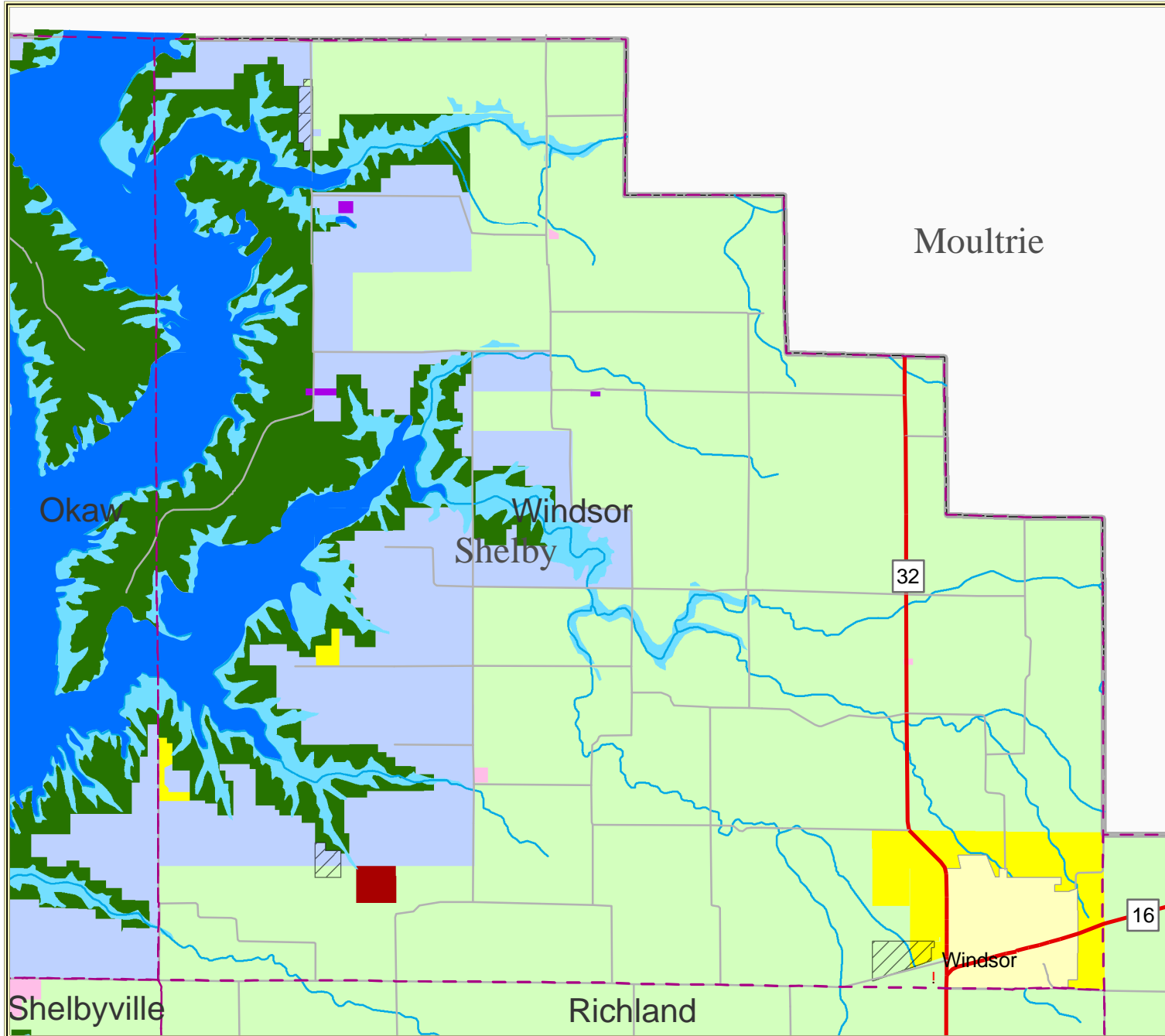


# Windsor, Shelby County, IL

## Current Zoning

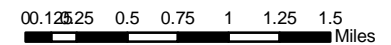


### LEGEND

#### Zoning

- |  |   |
|--|---|
|  A Agriculture              |  SE Sepecial Exception |
|  R1 Single-Family Residence |  VA Variance           |
|  RS Suburban Residential    |  Lake                  |
|  LR Lake Residence          |  Government Land       |
|  LB Local Business          |  U. S. Highway         |
|  GB General Business        |  Interstate            |
|  AB Accommodation Business  |  State Highway         |
|  I1 Industry                |  Township Roads        |
|  IR Industrial Reserve      |  Railroad              |
|  SC Shopping Center       |  Stream                |
|  Flood Plain              |  City                 |
|  Incorporated Community   |  Township Boundary   |
|  |  County Boundary     |

1:60,000



Source: USGS, ISGS, ESRI, DURP, RockFord Map  
 Created by: Yijie Zheng  
 Shelby County Project Working Group  
 Department of Urban & Regional Planning  
 University of Illinois at Urbana-Champaign  
 Date: March, 2005  
 Coordinate system: NAD 1983 StatePlane  
 Illinois East FIPS 1201 Feet