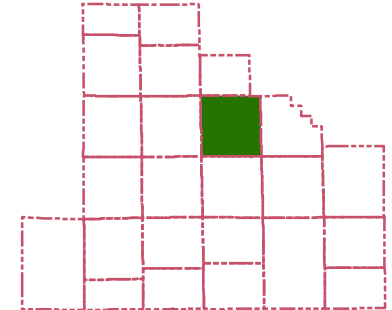
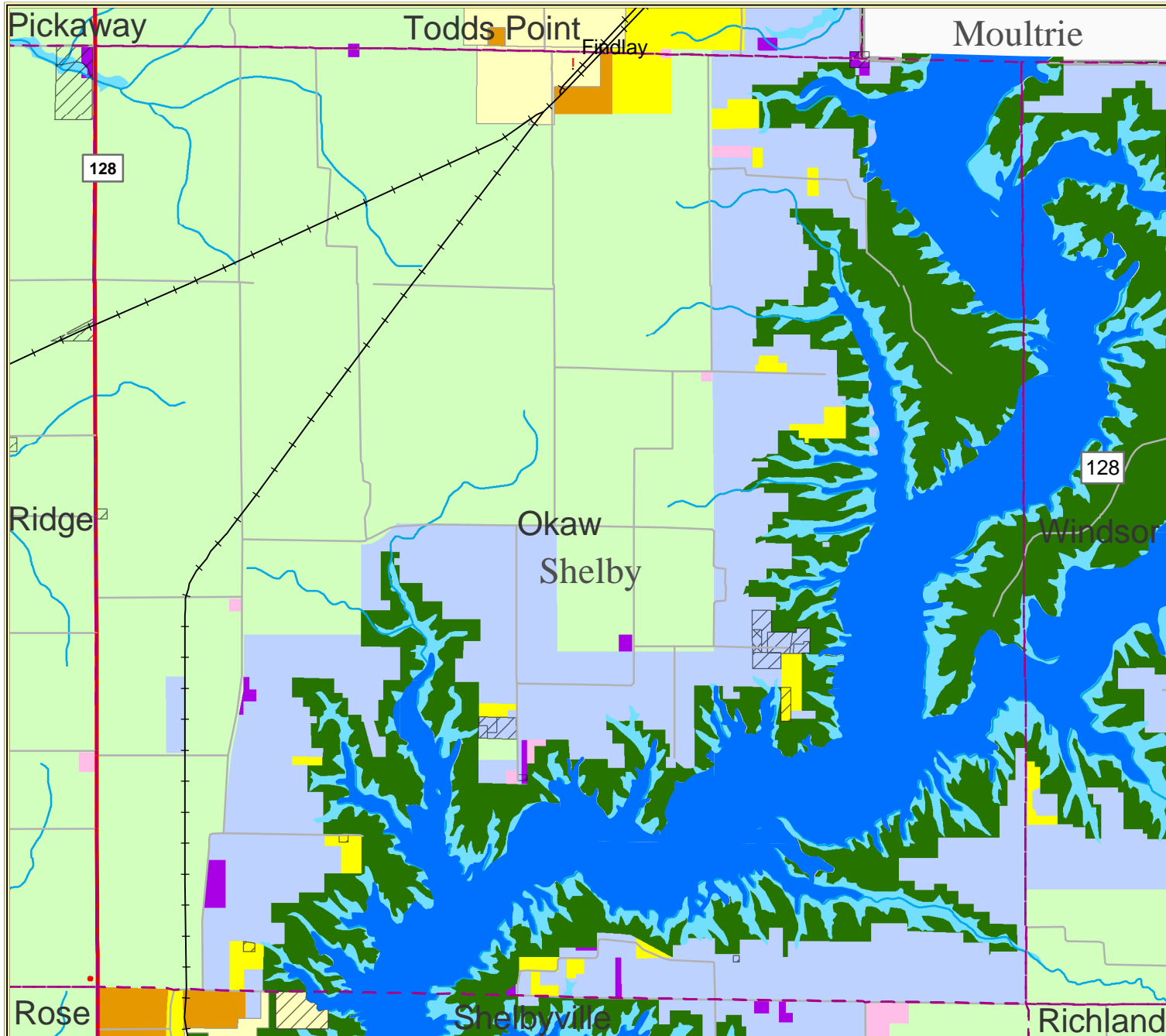


# Okaw, Shelby County, IL

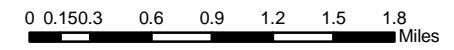
## Current Zoning



### LEGEND

- |                            |                      |
|----------------------------|----------------------|
| <b>Zoning</b>              | SE Special Exception |
| A Agriculture              | VA Variance          |
| R1 Single-Family Residence | Lake                 |
| RS Suburban Residential    | Government Land      |
| LR Lake Residence          | U. S. Highway        |
| LB Local Business          | Interstate           |
| GB General Business        | State Highway        |
| AB Accommodation Business  | Township Roads       |
| I1 Industry                | Railroad             |
| IR Industrial Reserve      | Stream               |
| SC Shopping Center         | City                 |
| Flood Plain                | Township Boundary    |
| Incorporated Community     | County Boundary      |

1:60,000



Source: USGS, ISGS, ESRI, DURP, RockFord Map  
 Created by: Yijie Zheng  
 Shelby County Project Working Group  
 Department of Urban & Regional Planning  
 University of Illinois at Urbana-Champaign  
 Date: March, 2005  
 Coordinate system: NAD 1983 StatePlane  
 Illinois East FIPS 1201 Feet