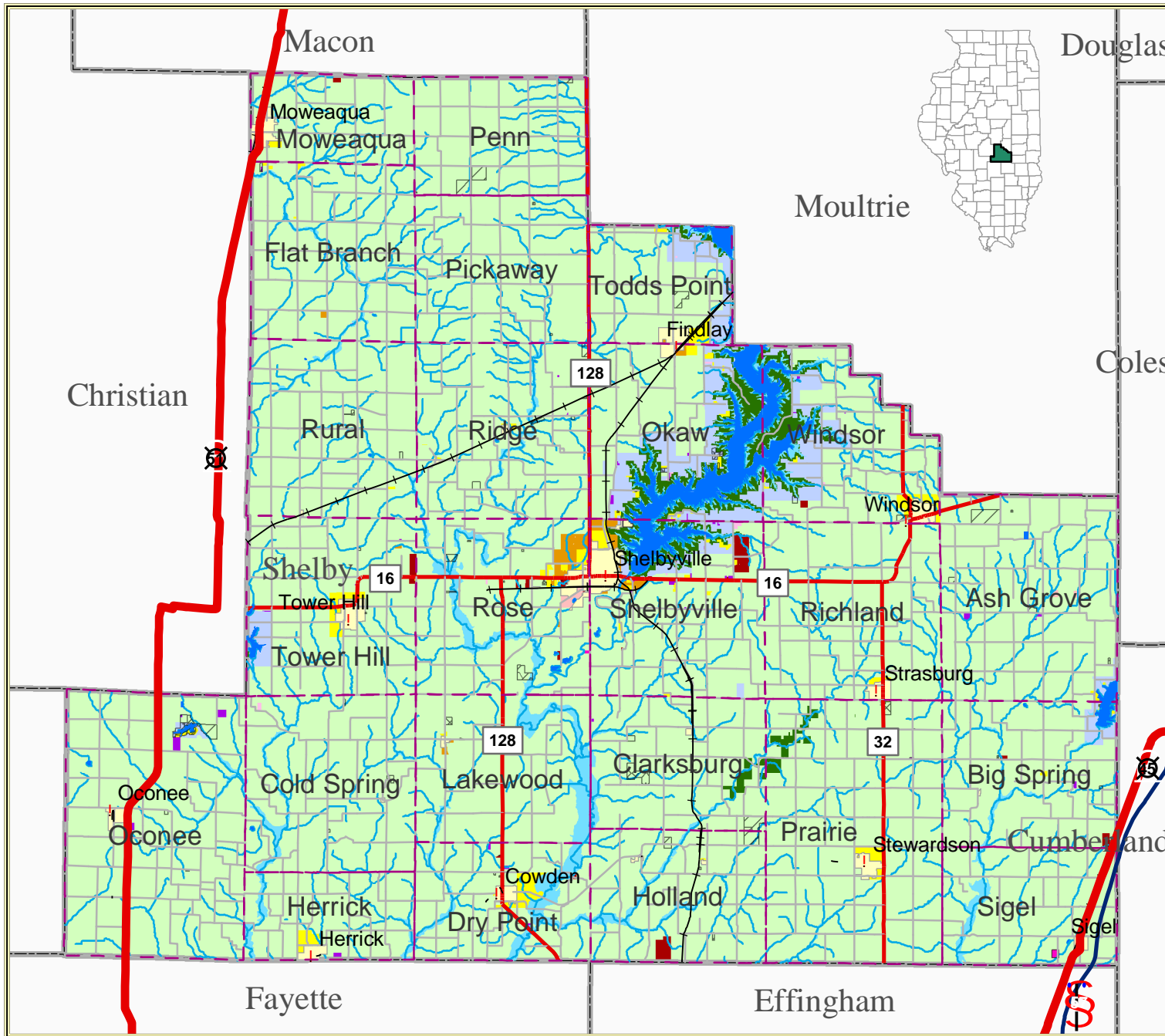


Zoning Map of Shelby County, IL



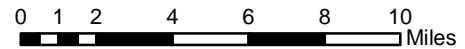
LEGEND

Zoning

- A Agriculture
- R1 Single-Family Residence
- RS Suburban Residential
- LR Lake Residence
- LB Local Business
- GB General Business
- AB Accommodation Business
- I1 Industry
- IR Industrial Reserve
- SC Shopping Center
- Flood Plain
- Incorporated Community
- SE Sepecial Exception
- VA Variance
- Lake
- Government Land
- U. S. Highway
- Interstate
- State Highway
- Township Roads
- Railroad
- Stream
- ! City
- Township Boundary
- County Boundary



1:320,000



Source: USGS, ISGS, ESRI, DURP, RockFord Map
 Created by: Yijie Zheng
 Shelby County Project Working Group
 Department of Urban & Regional Planning
 University of Illinois at Urbana-Champaign
 Date: March, 2005
 Coordinade system: NAD 1983 StatePlane
 Illinois East FIPS 1201 Feet